



MUNICIPAL MONEY MATTERS

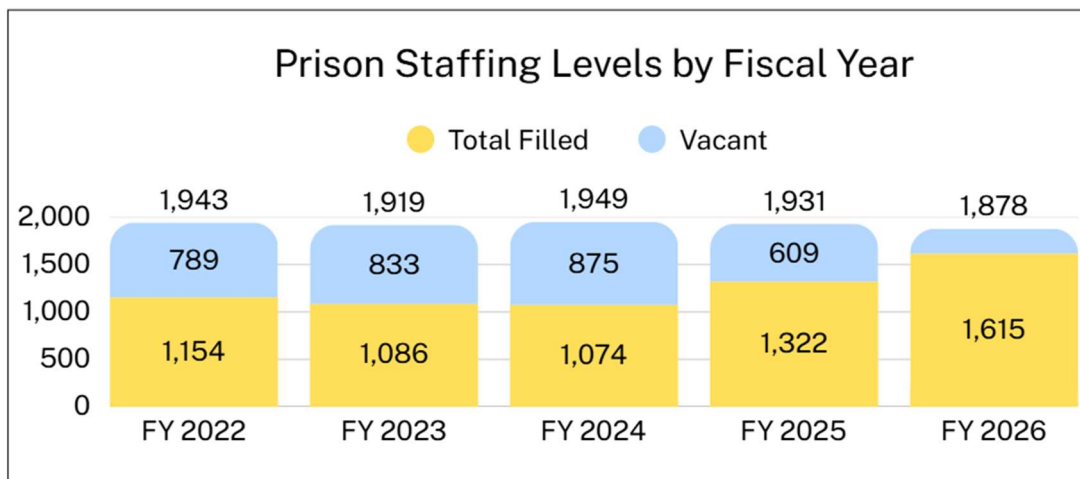
Philadelphia City Controller Christy Brady

May 2026

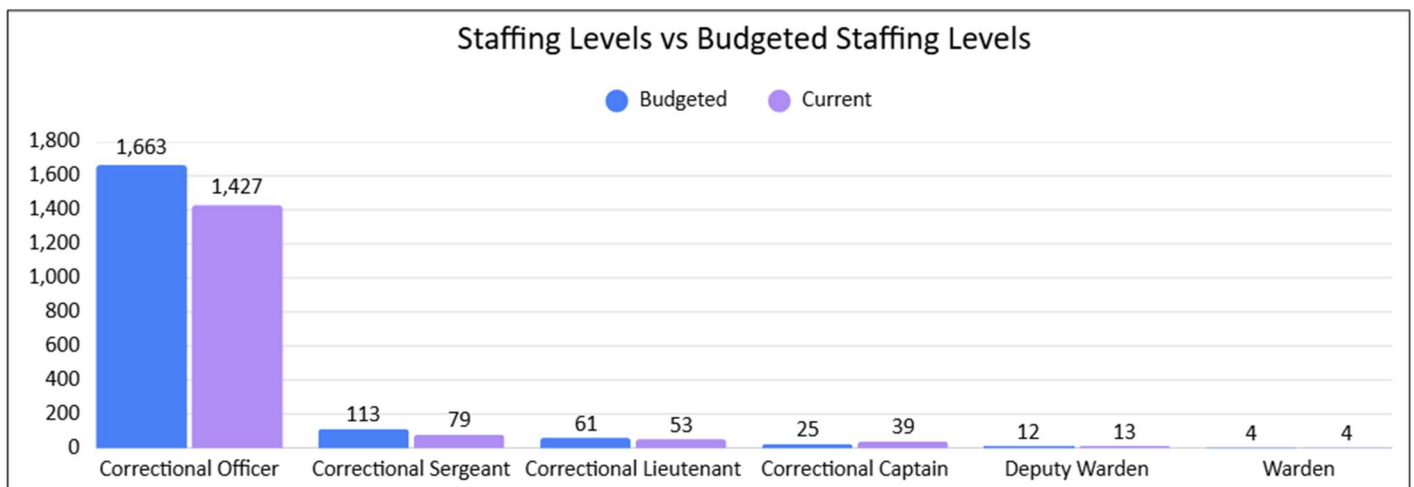
Philadelphia Prisons: Staffing Levels

Philadelphia's Department of Prisons operates five facilities housing approximately **2,500 to 3,000 incarcerated individuals**. Over time, the department has significantly increased filled positions, but staffing shortages remain a major operational challenge. To provide ongoing transparency and track progress, the Controller's Office has launched a bi-weekly Prison Staffing Shortage Tracker at controller.phila.gov.

As of **May 2026**, the department has **1,611 filled positions** out of **1,878 budgeted roles**, leaving **263 vacancies**, or **14%** of all authorized positions unfilled. This is a **70% reduction** in vacancies from FY 2024, when the fill rate was only **55.1%**.



Correctional Officer's account for the largest staffing gap. Of the **1,663 authorized correctional officer** positions, only **1,427 are filled**, representing **236 vacancies** in the role most critical to facility operations and inmate supervision. At the same time, the incarcerated population remains near **3,100 individuals**, creating an inmate-to-correctional-officer ratio of **2.18 to 1**. Persistent vacancies contribute to overtime costs, operational strain, and safety concerns for both staff and incarcerated individuals.



Each month Controller Brady looks forward to bringing transparency and accountability of our city, right to you.